



Automotive Computer Peripheral Power Supply Version 1 Rev. 1.03 User Manual



Brief:

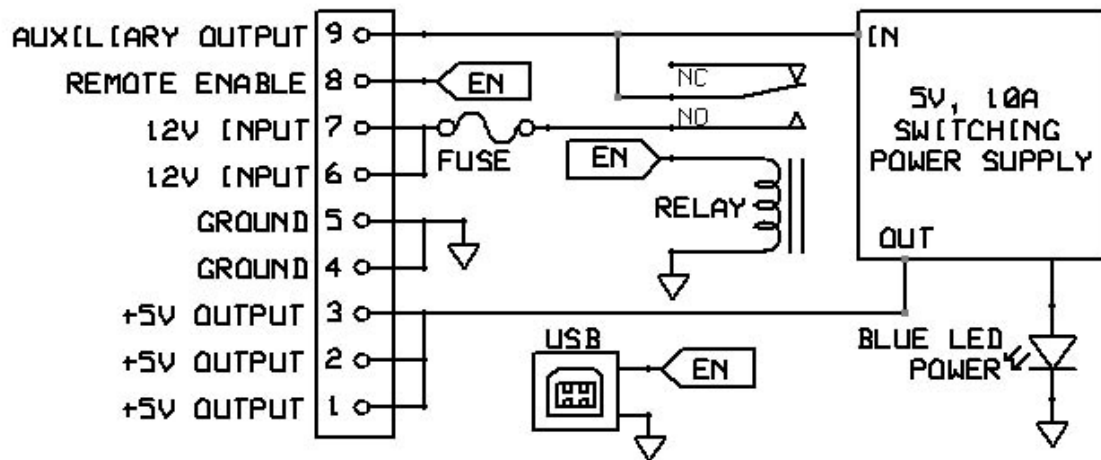
The ACPPSv1 R1.03 is an automotive specific Point of Load (POL) aimed at USB power applications. It offers high power, accuracy, reliability, low noise, and durability. Safety features include output short circuit, and over temperature protection.

Specifications:

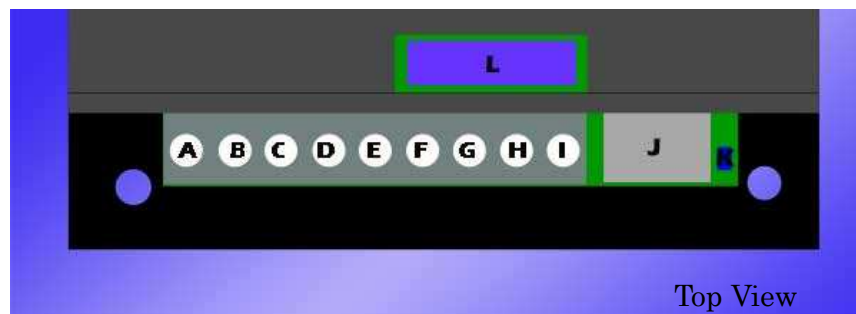
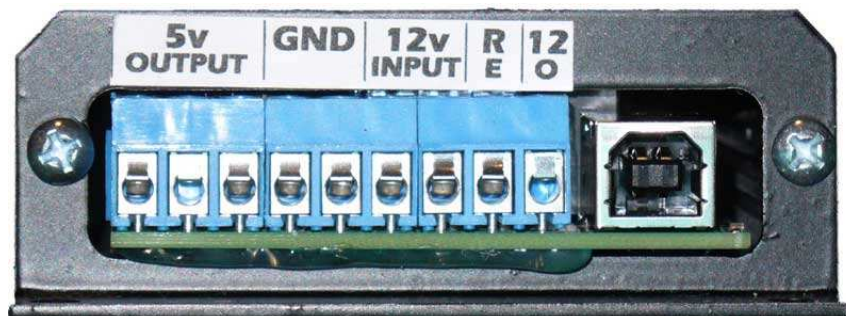
Input Voltage: 9-20V
Stand by Current: $<5\mu\text{A}$
Idle Current, No Load: $<40\text{mA}$
Remote Enable Signal: 5-20V
Auxiliary Output Current: 5A
Switching Frequency:
300 kHz
Operating temperature:
40°C to -40°C

Output Voltage: 5V \pm 2%
Output Current:
7.5A (Continuous)
10A (Peak, $<3\text{min}$)
Output Ripple:
 $<35\text{mV}$ (30C)
 $<125\text{mV}$ (-40C)

System Block Diagram:



Connections and Indicators:



- A. +5V Output
- B. +5V Output
- C. +5V Output
- D. Ground
- E. Ground
- F. +12V Input

- G. +12V Input
- H. Remote Enable
- I. Auxiliary Output
- J. USB Enable
- K. Status LED
- L. Fuse (15A ATO)

Description of Connections:

- **Auxiliary Output:**

The Auxiliary Output is connected to the 12V Input by a fuse and relay. When the ACPSS is “Enabled” the relay closes and the 12V Input is connected to this pin. The Auxiliary Output is not voltage regulated and should be limited to <5A to avoid damaging the contacts inside the relay. This output can be used to control other POL devices, Amp triggers, etc.

- **Remote Enable:**

This pin turns the ACPSS on when a positive voltage is applied. This pin will trigger on with as little as 5V or as much as 20V.

- **12V Input:**

In the aftermarket automotive industry this connection is commonly referred to as a “Constant Hot” or “Battery.” It should be connected to a 12V source that is not switched by the ignition. Both 12V inputs are tied together internally. One connection can be used as the input while the other is used to daisy-chain other devices requiring a constant 12V source. Do not exceed 5A on a daisy chained device.

- **Ground:**

This connection should be connected to a ground, chassis or negative power source. Both grounds are connected directly together internally. This can be used to daisy-chain multiple devices or provide the negative output to the load.

- **5V Output:**

These 3 connections provide the 5V output from the ACPSS. All three connections are tied together internally. The (combined) output current must be 7.5A or less for continuous operation.

- **Status LED:**

This Blue LED will illuminate solid when there is voltage at the 5V output. This indicates the ACPSS is producing 5V. If this light is flashing, the load is too big, or the ACPSS is in thermal protection mode.

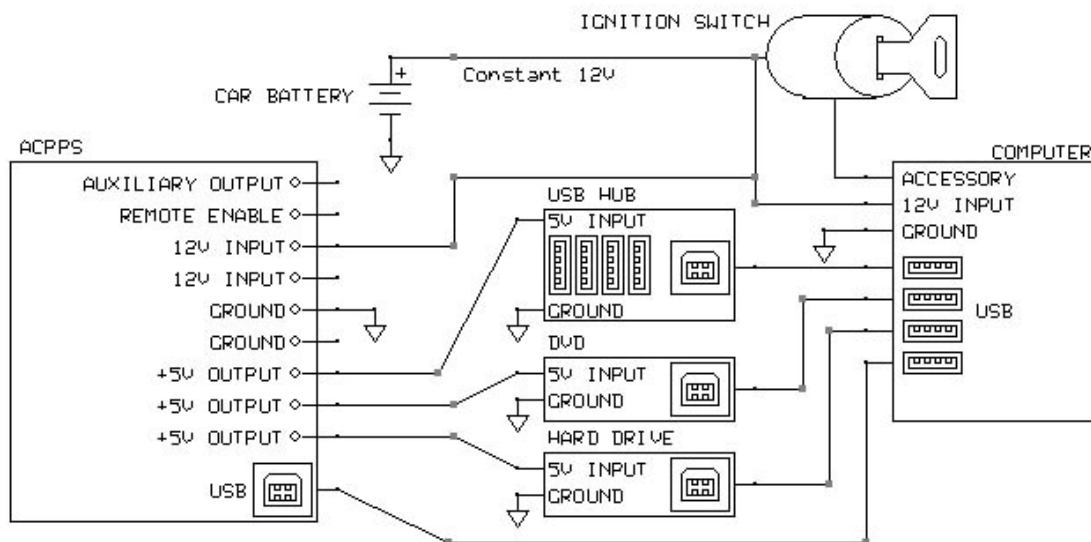
- **USB Enable:**

This connection monitors the power state of the host computer through a USB cable. When the host computer turns on, power is supplied through the USB ports and the ACPSS turns on. When power is removed from the USB ports the ACPSS will follow in sync. The ACPSS is not an actual USB device. The computer will not communicate with the ACPSS in any way and will not know it is attached.

Application Notes:

- Do not use the Remote Enable and the USB Enable connections at the same time. It is possible for these signals to conflict and cause improper operation.
- When using the vehicles' chassis as a ground point, keep wire lengths as short as possible (ACPPS and Load). This helps keep the 5V output accurate and stable at the load.
- To minimize voltage fluctuations when powering multiple loads use a separate 5V wire for each load, starting from the ACPPS.
- Remove the fuse while installing the ACPPS to avoid accidental power-ups and short circuits.
- Tighten any unused screws on the terminal block to keep them from falling out or causing shorts circuits.
- Reversing power wires can cause serious damage. Don't do it. Be careful and mindful while installing.

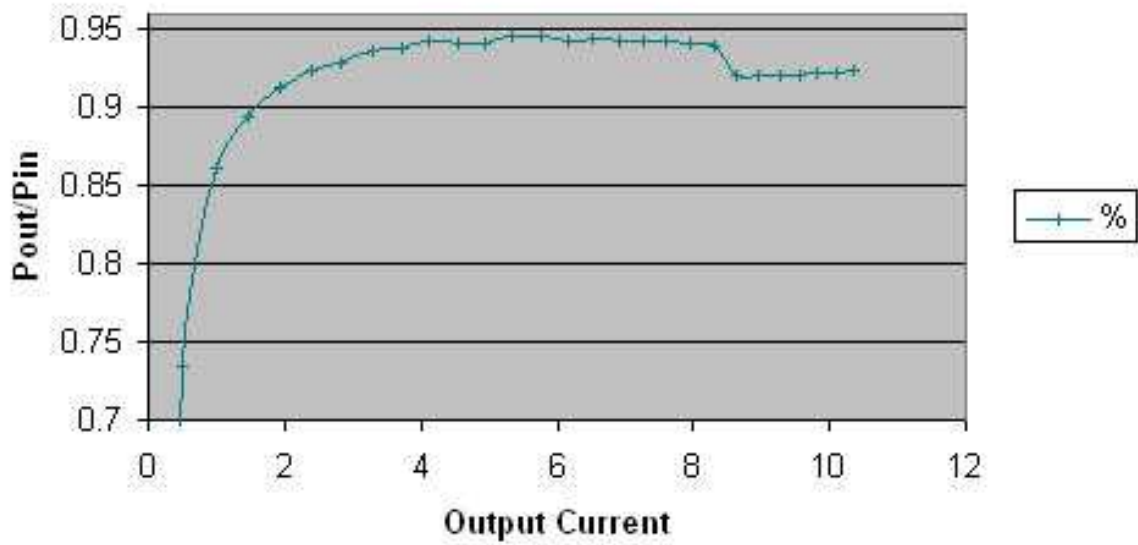
Typical Application, Computer Synchronized:



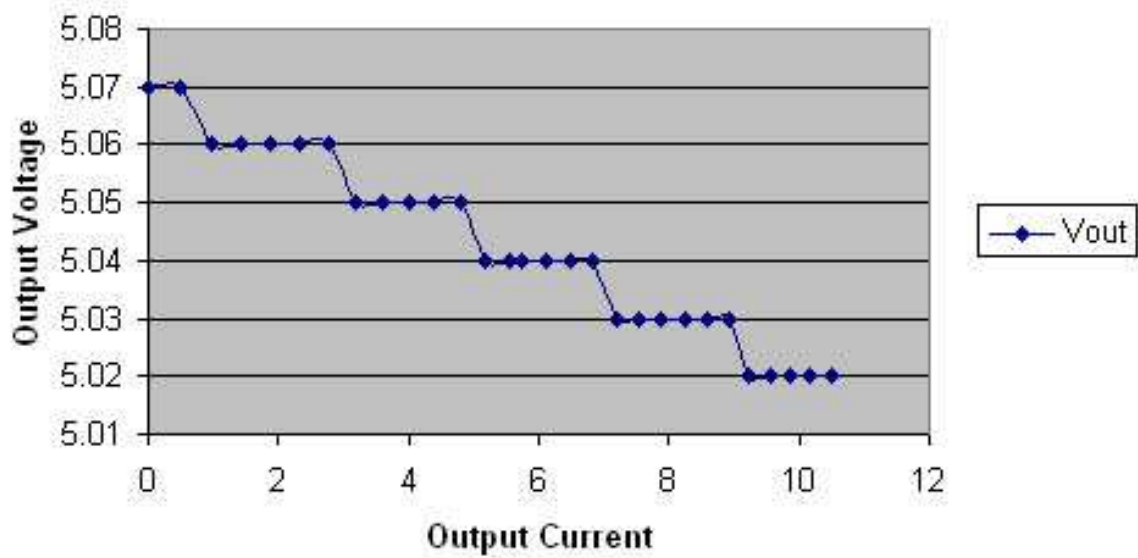
Troubleshooting:

Problem	Possible Causes/Solutions
No lights when remote signal is applied.	Bad connection(s). Remote, ground, enable. Check that relay clicks with remote.
Blue Light Flashing	Short circuit at 5V output. Try with load disconnected. Over temperature protection active.
Fuses blows immediately upon insertion	Short circuit on Aux output. Input power is connected backwards.
ACCPS stays on after computer is powered down or in standby.	One of your hubs is a “non powered” hub with a power input. Power is feeding from the hub into the computer and back out to the USB enable on the ACCPS. Replace hub, or contact Jopel designs for a USB Isolator.
Load Malfunctions	Bad connection (5V or GND), wire(s) too small or long.

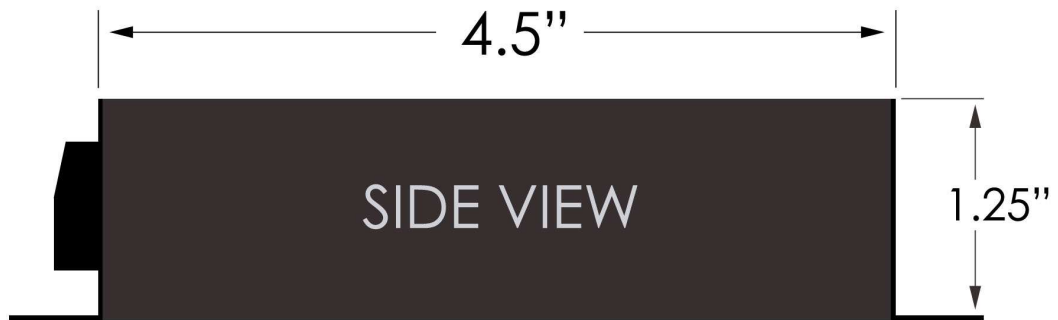
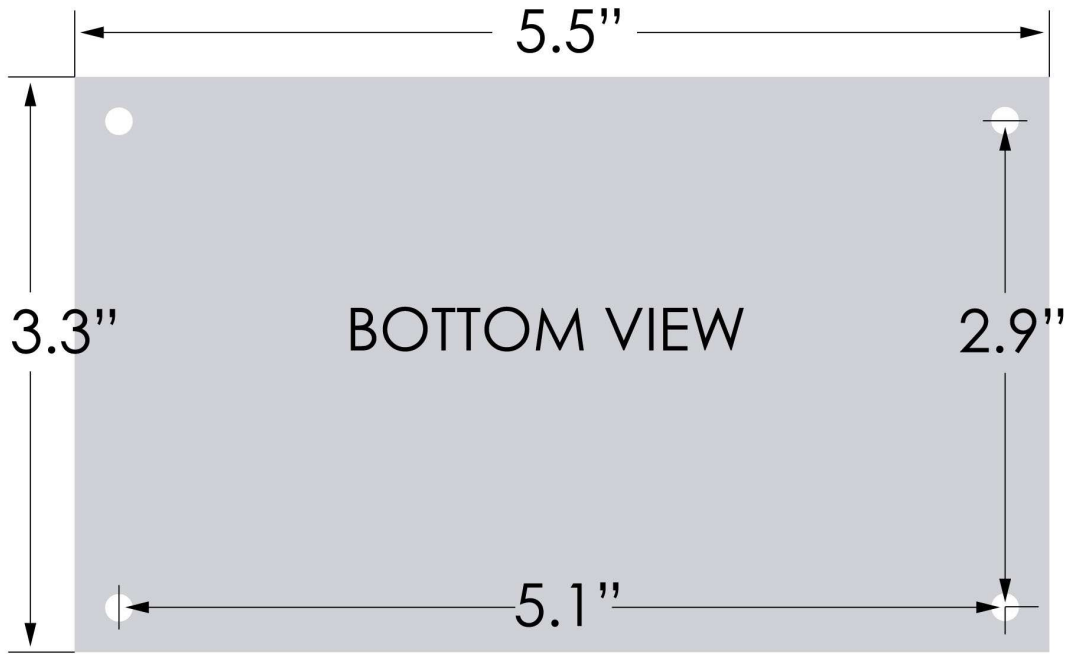
Efficiency



Output Voltage Regulation



Mechanical Specifications:



Disclaimer of Liability

Jopel Designs shall not be held liable for any improper or incorrect use of the information described and/or contained herein and assumes no responsibility for anyone's use of the information. In no event shall Jopel Designs be liable for any direct, indirect, incidental, special, exemplary, or consequential damages (including, but not limited to, procurement or substitute goods or services; loss of use, data, or profits; or business interruption) however caused and on any theory of liability, whether in contract, strict liability, or tort (including negligence or otherwise) arising in any way out of the use of this product, even if advised of the possibility of such damage.

This disclaimer of liability applies to any damages or injury, including but not limited to those caused by any failure of performance, error, omission, interruption, deletion, defect, delay in operation or transmission, computer virus, communication line failure, theft or destruction or unauthorized access to, alteration of, whether for breach of contract tortuous behavior, negligence or under any other cause of action.

User agrees to defend, indemnify, and hold harmless, Jopel Designs, its contributors, any entity jointly created by them, their respective affiliates and their respective directors, officers, employees, and agents from and against all claims and expenses, including attorneys' fees, arising out of the use of any product or service by user or user's account.

Warranty Information

Jopel Designs warrants its products to be free from defects in material and workmanship for 120 days, from date of purchase. If a product proves to be defective in material or workmanship during the warranty period, Jopel Designs will, at its sole option, repair or replace the product with a similar product. Replacement Product or parts may include remanufactured or refurbished parts or components. The replacement unit will be covered by the balance of the time remaining on the customer's original limited warranty.

Jopel Designs

Portland, Oregon. 2008

For Customer Support:

CustomerSupport@jopeldesigns.com

Author: Jesse Banks

Document Rev1.04